



مجلس أبوظبي للجودة والمطابقة  
ABU DHABI QUALITY AND CONFORMITY COUNCIL



## شهادة المطابقة

# Certificate of Conformity

Certificate No.:

QAD2017.989.1.LV

رقم الشهادة:

This certificate is  
issued for the product:

Low Voltage Main Distribution Boards  
As listed on Conformity Document  
QAD2017.989.1.LV

تم منح هذه الشهادة للمنتج:

Certificate Holder:

Verger Delporte UAE Ltd.

الخاص بشركة:

According to the  
requirements of:

Abu Dhabi Certification Scheme for  
Low Voltage Switchgear

وفقاً للمطلبات الخاصة بـ:

Issue date: 26 November 2017

Expiry date: 25 November 2018



رئيس لجنة إصدار شهادة المطابقة  
Certification Committee Chairman



مجلس أبوظبي للجودة والمطابقة  
ABU DHABI QUALITY AND CONFORMITY COUNCIL



## وثيقة المطابقة Conformity Document

Issuing Date:	26-Nov-2017	تاريخ الإصدار:
Expiry Date:	25-Nov-2018	تاريخ الانتهاء:
Certificate No.:	QAD2017.989.1.LV	رقم الشهادة:
Conformity Scheme:	Low Voltage Switchgear	برنامج المطابقة:
Product:	LV Main Distribution Boards	المنتج:
Name and Address of the Licensee:	Verger Delporte UAE Ltd. Industrial Road-1, Industrial Area-5. PO Box 5629, Sharjah, UAE	اسم وعنوان صاحب الحق باستخدام العلامة:
Name and Address of the Manufacturer and the Factory:	Verger Delporte UAE Ltd. Industrial Road-1, Industrial Area-5. PO Box 5629, Sharjah, UAE	اسم وعنوان المصنع ومكان التصنيع:
Trademark / brand name:	Verger Delporte UAE Ltd.	العلامة / الاسم التجاري:
Model / Type:	Refer to QAD2017.989.1.LV Annex	الموديل / النوع:
Rating and principal Characteristics:	Refer to QAD2017.989.1.LV Annex	الخصائص الرئيسية للمنتج:
Specified standard:	IEC 61439-2 Ed. 1.0 2009-01 IEC 61439-2: Ed. 2.0 2011-08	المواصفة:
Test report number:	Refer to QAD2017.989.1.LV Annex	رقم تقرير الفحص:
Report Issue Date:	Refer to QAD2017.989.1.LV Annex	تاريخ إصدار التقرير:



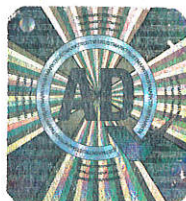




وثيقة المطابقة  
Conformity Document

QAD2017.989.1.LV Annex  
QCC Trustmarked Low Voltage Main Distribution Boards

Sr. No.	Type/Model	Rating Characteristics	Certificate
1	<b>CAMGRO SYSTEM-250A MDB/SMDB/MCC – Form 4b</b> Low Voltage Switchgear and Controlgear Assembly, comprising of three-phase busbar system, incoming MCCB and outgoing MCCBs. <b>Circuits Breaker Manufacturer:</b> Schneider Electric	<ul style="list-style-type: none"><li>Rated voltage: 415V/1000V/8kV (Ue/Ui/Uimp);</li><li>Maximum current rating: 250A;</li><li>Rated short-circuit current: 50 kA;</li><li>Rated frequency: 50 Hz;</li><li>IP rating: IP 54;</li><li>Main Busbar size (mm): 1x60x5</li></ul>	<b>DEKRA</b> <b>2147939.100</b> 23-Jul-2012
2	<b>CAMGRO SYSTEM-630A MDB/SMDB/MCC – Form 4b</b> Low Voltage Switchgear and Controlgear Assembly, comprising of three-phase busbar system, incoming MCCB and outgoing MCCBs. <b>Circuits Breaker Manufacturer:</b> Schneider Electric	<ul style="list-style-type: none"><li>Rated voltage: 415V/1000V/8kV (Ue/Ui/Uimp);</li><li>Maximum current rating: 630A;</li><li>Rated short-circuit current: 50 kA;</li><li>Rated frequency: 50 Hz;</li><li>IP rating: IP 54;</li><li>Main Busbar size (mm): 1x100x5</li></ul>	<b>DEKRA</b> <b>2147939.101</b> 23-Jul-2012
3	<b>CAMGRO SYSTEM-1000A MDB/MCC – Form 4b</b> Low Voltage Switchgear and Controlgear Assembly, comprising of three-phase busbar system, incoming ACB and outgoing MCCBs. <b>Circuits Breaker Manufacturer:</b> Schneider Electric	<ul style="list-style-type: none"><li>Rated voltage: 415V/1000V/8kV (Ue/Ui/Uimp);</li><li>Maximum current rating: 1000A;</li><li>Rated short-circuit current: 50kA/85kA;</li><li>Rated frequency: 50 Hz;</li><li>IP rating: IP 54;</li><li>Main Busbar size (mm): 2x60x5</li></ul>	<b>asefa 002a-11BT</b> 29-Mar-2011
4	<b>CAMGRO SYSTEM-1600A MDB/MCC – Form 4b</b> Low Voltage Switchgear and Controlgear Assembly, comprising of three-phase busbar system, incoming ACB and outgoing MCCBs. <b>Circuits Breaker Manufacturer:</b> Schneider Electric	<ul style="list-style-type: none"><li>Rated voltage: 415V/1000V/8kV (Ue/Ui/Uimp);</li><li>Maximum current rating: 1600A;</li><li>Rated short-circuit current: 50kA/85kA;</li><li>Rated frequency: 50 Hz;</li><li>IP rating: IP 54;</li><li>Main Busbar size (mm): 2x100x5</li></ul>	<b>asefa 003a-11BT</b> 29-Mar-2011
5	<b>CAMGRO SYSTEM-2500A MDB/MCC – Form 4b</b> Low Voltage Switchgear and Controlgear Assembly, comprising of three-phase busbar system, incoming ACB and outgoing ACBs and MCCBs. <b>Circuits Breaker Manufacturer:</b> Schneider Electric	<ul style="list-style-type: none"><li>Rated voltage: 415V/1000V/8kV (Ue/Ui/Uimp);</li><li>Maximum current rating: 2500A;</li><li>Rated short-circuit current: 50kA/85kA;</li><li>Rated frequency: 50 Hz;</li><li>IP rating: IP 54;</li><li>Main Busbar size (mm): 4x100x5</li></ul>	<b>asefa 004a-11BT</b> 29-Mar-2011







وثيقة المطابقة  
Conformity Document

Sr. No.	Type/Model	Rating Characteristics	Certificate
6	<b>CAMGRO SYSTEM-3200A MDB/MCC - Form 4b</b> Low Voltage Switchgear and Controlgear Assembly, comprising of three-phase busbar system, incoming ACB and outgoing MCCBs. <b>Circuits Breaker Manufacturer:</b> Schneider Electric	<ul style="list-style-type: none"><li>Rated voltage: 415V/1000V/12kV (Ue/Ui/Uimp);</li><li>Maximum current rating: 3200A;</li><li>Rated short-circuit current: 85 kA;</li><li>Rated frequency: 50 Hz;</li><li>IP rating: IP 54;</li><li>Main Busbar size (mm): 5x125x5</li></ul>	<b>asefa 062-12BT</b> 11-Sep-2012
7	<b>CAMGRO SYSTEM-4000A MDB/MCC - Form 4b</b> Low Voltage Switchgear and Controlgear Assembly, comprising of three-phase busbar system, incoming ACB and outgoing ACBs and MCCBs. <b>Circuits Breaker Manufacturer:</b> Schneider Electric	<ul style="list-style-type: none"><li>Rated voltage: 415V/1000V/12kV (Ue/Ui/Uimp);</li><li>Maximum current rating: 4000A;</li><li>Rated short-circuit current: 100 kA;</li><li>Rated frequency: 50 Hz;</li><li>IP rating: IP 54;</li><li>Main Busbar size (mm): 8x100x5</li></ul>	<b>asefa 129c-11BT</b> 6-Feb-2012
8	<b>CAMGRO SYSTEM-6000A MDB/MCC - Form 4b</b> Low Voltage Switchgear and Controlgear Assembly, comprising of three-phase busbar system, incoming ACB and outgoing ACBs and MCCBs. <b>Circuits Breaker Manufacturer:</b> Schneider Electric	<ul style="list-style-type: none"><li>Rated voltage: 415V/1000V/12kV (Ue/Ui/Uimp);</li><li>Maximum current rating: 6000A;</li><li>Rated short-circuit current: 100 kA;</li><li>Rated frequency: 50 Hz;</li><li>IP rating: IP 31;</li><li>Main Busbar size (mm): 10x100x5</li></ul>	<b>asefa 130a-11BT</b> 12-Dec-2012
9	<b>CAMGRO S1 SYSTEM-250A SMDB - Form 2b</b> Low Voltage Switchgear and Controlgear Assembly, comprising of three-phase busbar system, incoming ACB and outgoing MCCBs. <b>Circuits Breaker Manufacturer:</b> Schneider Electric	<ul style="list-style-type: none"><li>Rated voltage: 415V/690V/6kV (Ue/Ui/Uimp);</li><li>Maximum current rating: 250A;</li><li>Rated short-circuit current: 36 kA;</li><li>Rated frequency: 50 Hz;</li><li>IP rating: IP 54;</li><li>Main Busbar size (mm): 1x40x5</li></ul>	<b>DEKRA 2137902.102</b> 6-Apr-2011
10	<b>CAMGRO S2 SYSTEM-400A SMDB - Form 2b</b> Low Voltage Switchgear and Controlgear Assembly, comprising of three-phase busbar system, incoming MCCB and outgoing MCCBs. <b>Circuits Breaker Manufacturer:</b> Schneider Electric	<ul style="list-style-type: none"><li>Rated voltage: 415V/690V/6kV (Ue/Ui/Uimp);</li><li>Maximum current rating: 400A;</li><li>Rated short-circuit current: 42 kA;</li><li>Rated frequency: 50 Hz;</li><li>IP rating: IP 54;</li><li>Main Busbar size (mm): 1x60x5</li></ul>	<b>DEKRA 2137902.103</b> 6-Apr-2011
11	<b>CAMGRO S3 SYSTEM-630A SMDB - Form 2b</b> Low Voltage Switchgear and Controlgear Assembly, comprising of three-phase busbar system, incoming MCCB and outgoing MCCBs. <b>Circuits Breaker Manufacturer:</b> Schneider Electric	<ul style="list-style-type: none"><li>Rated voltage: 415V/690V/6kV (Ue/Ui/Uimp);</li><li>Maximum current rating: 630A;</li><li>Rated short-circuit current: 50 kA;</li><li>Rated frequency: 50 Hz;</li><li>IP rating: IP 54;</li><li>Main Busbar size (mm): 2x50x5</li></ul>	<b>DEKRA 2137902.104</b> 6-Apr-2011







وثيقة المطابقة

Conformity Document

Sr. No.	Type/Model	Rating Characteristics	Certificate
12	<b>CAMGRO S4 SYSTEM-800A SMDB - Form 2b</b> Low Voltage Switchgear and Controlgear Assembly, comprising of three-phase busbar system, incoming MCCB and outgoing MCCBs. <b>Circuits Breaker Manufacturer:</b> Schneider Electric	<ul style="list-style-type: none"><li>Rated voltage: 415V/690V/6kV (Ue/Ui/Uimp);</li><li>Maximum current rating: 800A;</li><li>Rated short-circuit current: 50 kA;</li><li>Rated frequency: 50 Hz;</li><li>IP rating: IP 54;</li><li>Main Busbar size (mm): 2x50x5</li></ul>	<b>DEKRA</b> <b>2137902.105</b> 6-Apr-2011
13	<b>CAMGRO F5 SYSTEM-125A SPLIT TYPE FDB</b> Low Voltage Switchgear and Controlgear Assembly, comprising of three-phase busbar system, incoming isolator and 2 RCCB section outgoing MCBs. <b>Circuits Breaker Manufacturer:</b> Schneider Electric	<ul style="list-style-type: none"><li>Rated voltage: 400V/500V/6kV (Ue/Ui/Uimp);</li><li>Maximum current rating: 125A;</li><li>Rated short-circuit current: 17 kA-0.25s;</li><li>Rated frequency: 50 Hz;</li><li>IP rating: IP 41;</li><li>Main Busbar size (mm): 1x15x3</li></ul>	<b>DEKRA</b> <b>2155972.102</b> 20-Nov-2012
14	<b>CAMGRO F6 SYSTEM-250A FDB</b> Low Voltage Switchgear and Controlgear Assembly, comprising of three-phase busbar system, incoming MCCB and outgoing MCBs. <b>Circuits Breaker Manufacturer:</b> Schneider Electric	<ul style="list-style-type: none"><li>Rated voltage: 400V/500V/6kV (Ue/Ui/Uimp);</li><li>Maximum current rating: 250A;</li><li>Rated short-circuit current: 17 kA-0.25s;</li><li>Rated frequency: 50 Hz;</li><li>IP rating: IP 41;</li><li>Main Busbar size (mm): 1x15x5</li></ul>	<b>DEKRA</b> <b>2155972.103</b> 20-Nov-2012

The approval of the products listed above is subject to the following requirements:

1. The certification approval does not relieve the contractors installing QCC certified products in complying with RSB guidelines and ADDC standards that are applied to the Low Voltage Switchgear and Panel Boards.
2. All the breakers (both incoming and outgoing) shall be restricted to the components used in the test provided or to be tested by a third party certification body.
3. The QCC Conformity Document shall be submitted for every switchgear assembly at every product delivery and the AD Trustmark shall be fixed in all certified products.
4. Any malfunction or repeated faults of the installed switchgear assembly reported to QCC may lead to the cancellation of the QCC Trustmark.
5. It is the responsibility of the manufacturer to comply with any updated IEC Standards by means of additional product testing as required.
6. It is the responsibility of the supplier to keep their customers aware of the special conditions stated in the test reports that restrict the use of the approved materials at different connection environments.
7. Any product modifications shall be submitted to QCC for compliance verification.
8. The QCC Trustmark license holder shall be registered with ADWEA.

